



Carers Together

supporting and connecting carers in local communities

Older Carers in Middlesbrough: Data Analysis

March 2019

The data in this report was obtained by comparing, merging and analysing data from the Office for National Statistics (www.nomisweb.co.uk/reports). Data was also used from Carers Together database (Charitylog).

Data was merged into postcode areas to allow for analysis and to match with the data held by Carers Together. Please note that TS2 and TS6 were excluded from the analysis. TS2 was excluded because some of the wards in TS2 (Middlehaven) were not represented within ONS/Census data. TS6 was also not included due to the complexity of the wards crossing 2 authorities.

Wards were allocated to postcodes as follows;

Table 1. Wards allocated to postcodes

| TS1 | TS3 | TS4 | TS5 | TS7 | TS8 |
|------------|------------------------------------|------------|------------|------------|--------------------------|
| Gresham | Beckfield | Beechwood | Acklam | Marlon | Coulby Newham |
| University | Middlehaven | Clairville | Ayresome | Nunthorpe | Hemlington |
| | North Ormesby and Brambles Farm | | Brookfield | | Marlon West |
| | Pallister | | Kader | | Stainton and Thornton |
| | Park End | | Ladgate | | |
| | Thorntree | | Linthorpe | | |



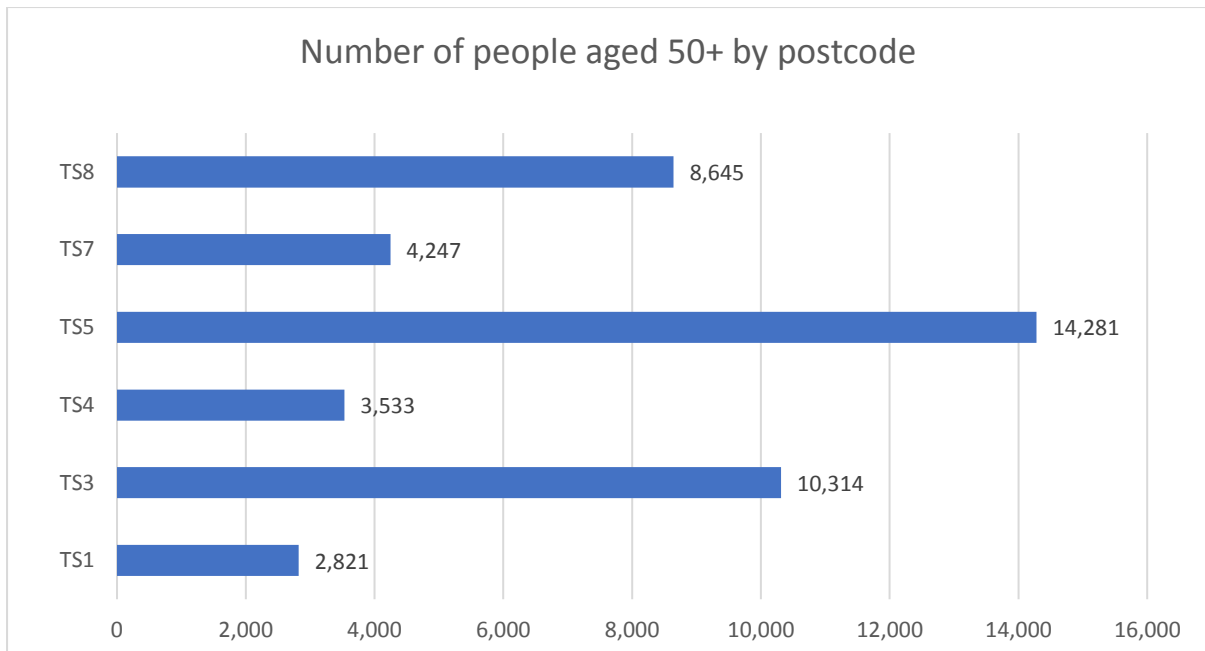


Figure 1. People aged 50+ by postcode

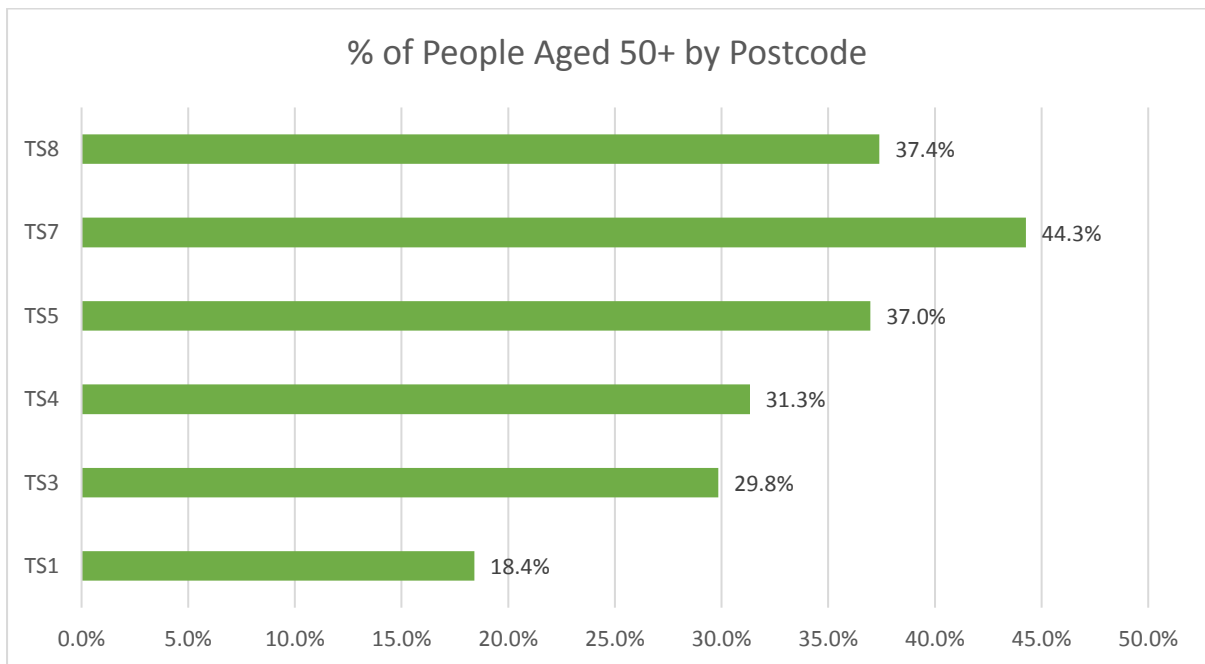


Figure 2. % of People Aged 50+ by Postcode



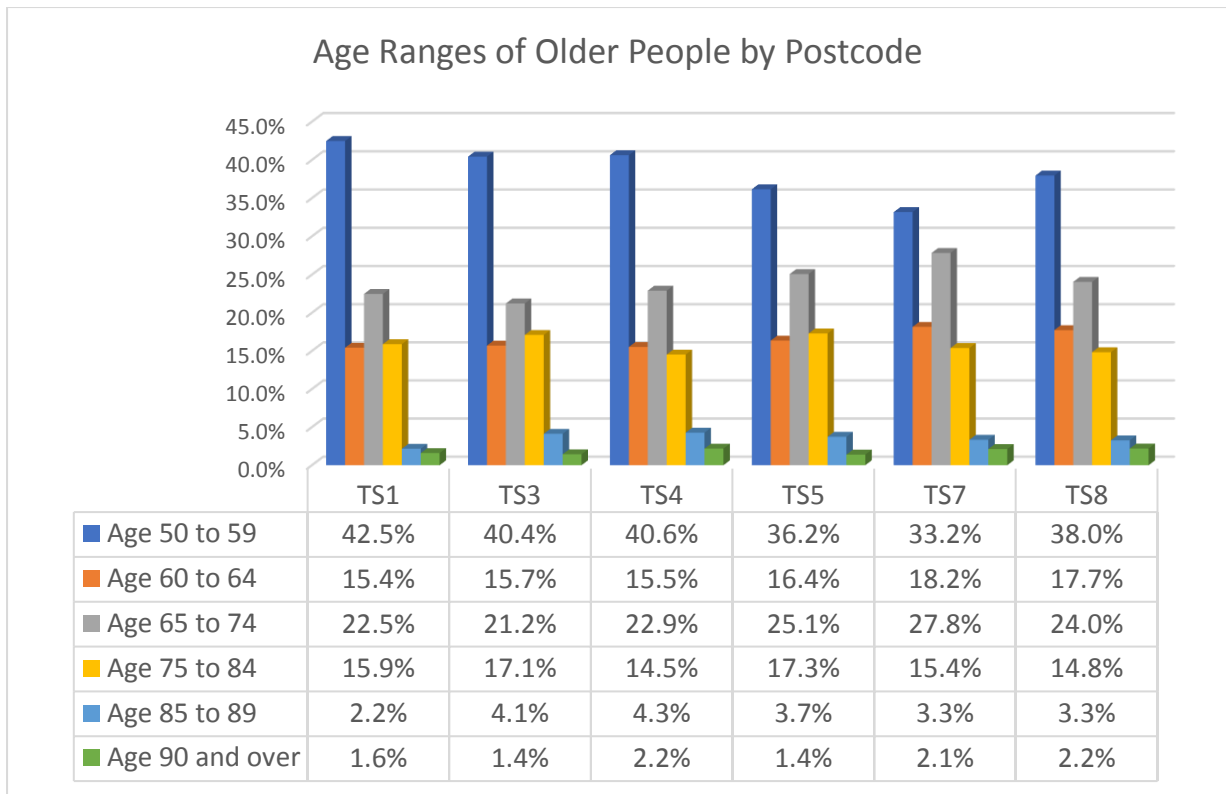


Figure 3. Age ranges of older people by postcode

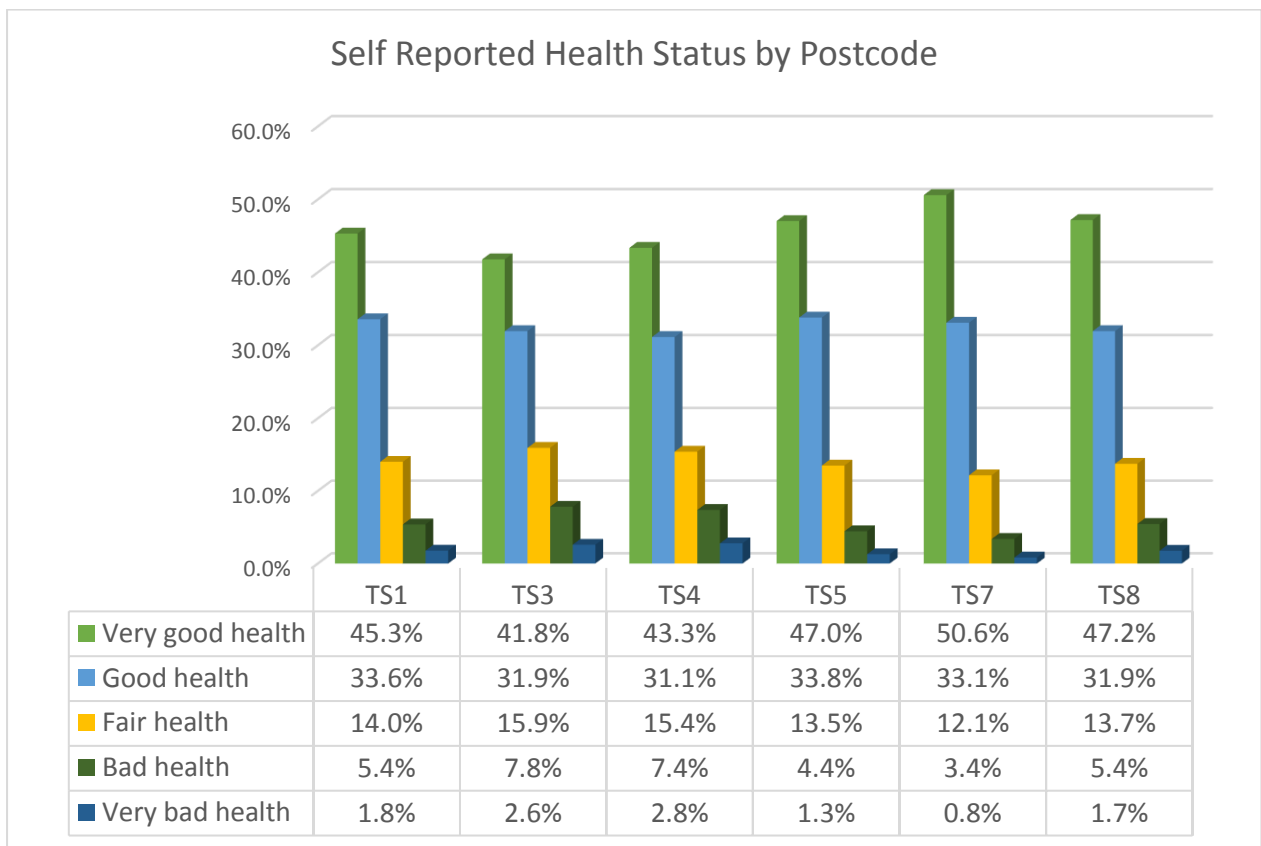


Figure 4 Self-reported health status by postcode.



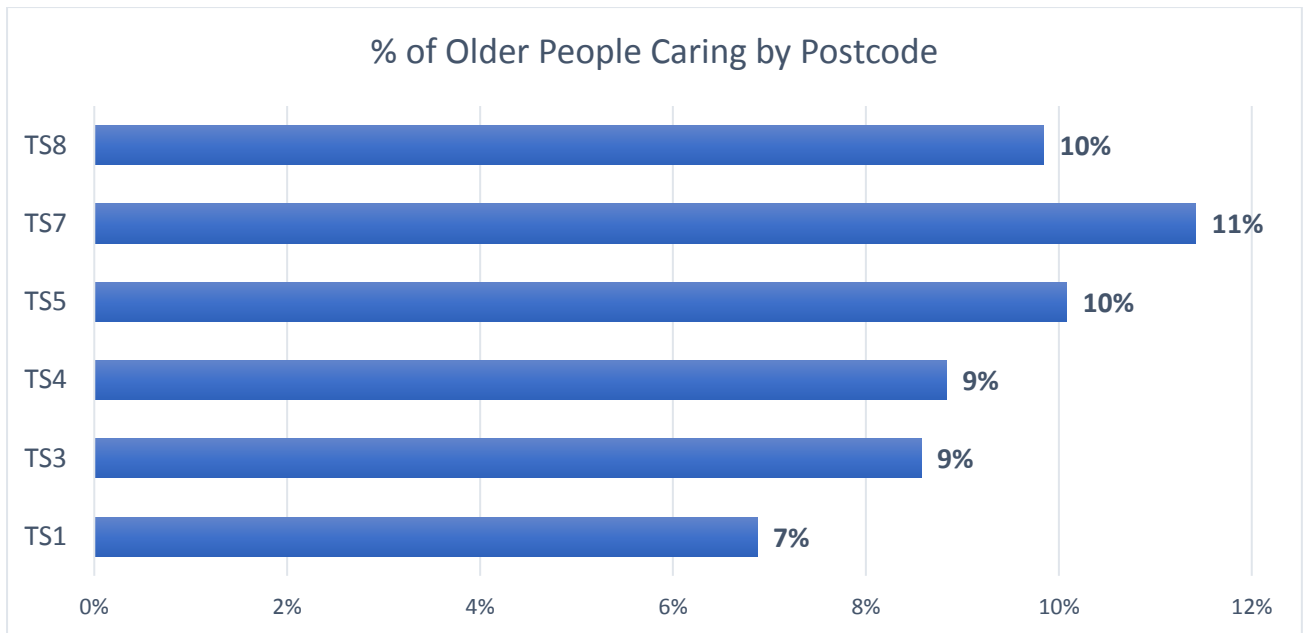


Figure 5. % of older people caring by postcode

The data in figure 5 shows the % of older carers in each postcode as identified through ONS/Census data. For example, we can see that 10% of people in TS8 have identified as providing care through ONS/Census data.

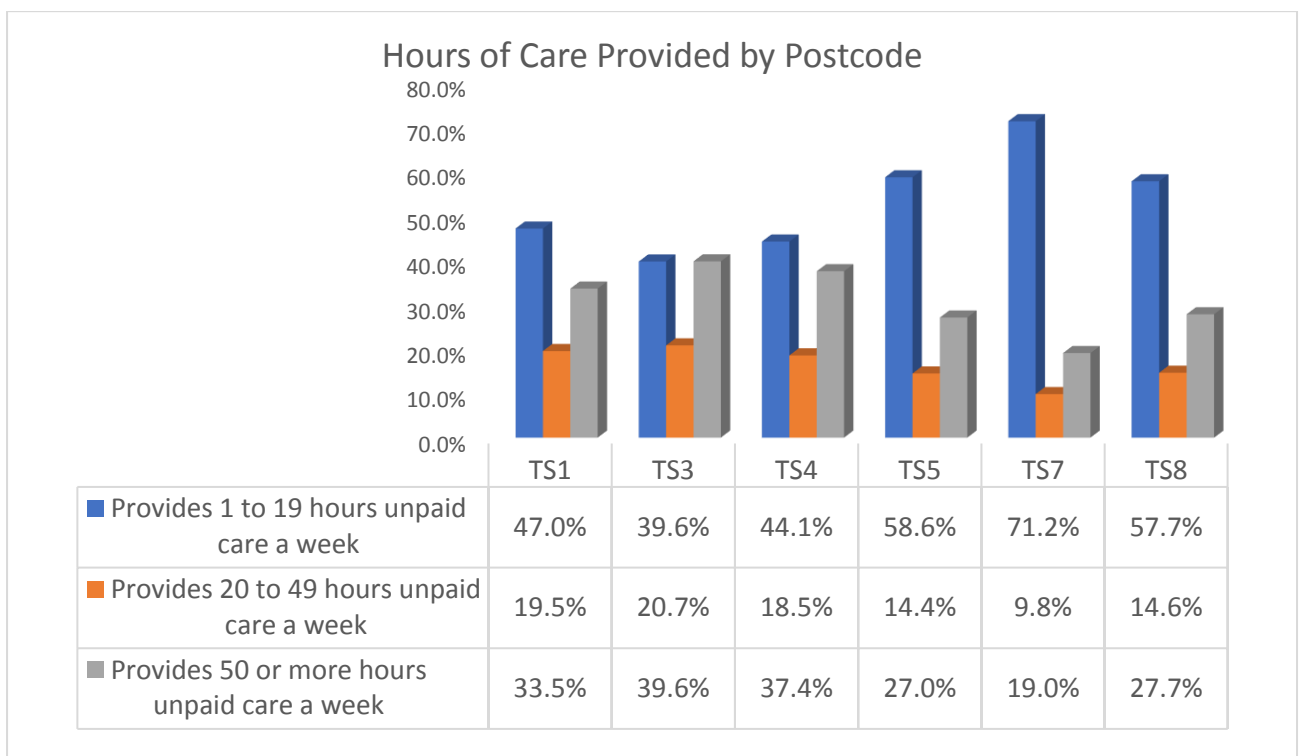


Figure 6 Hours of care provided by postcode



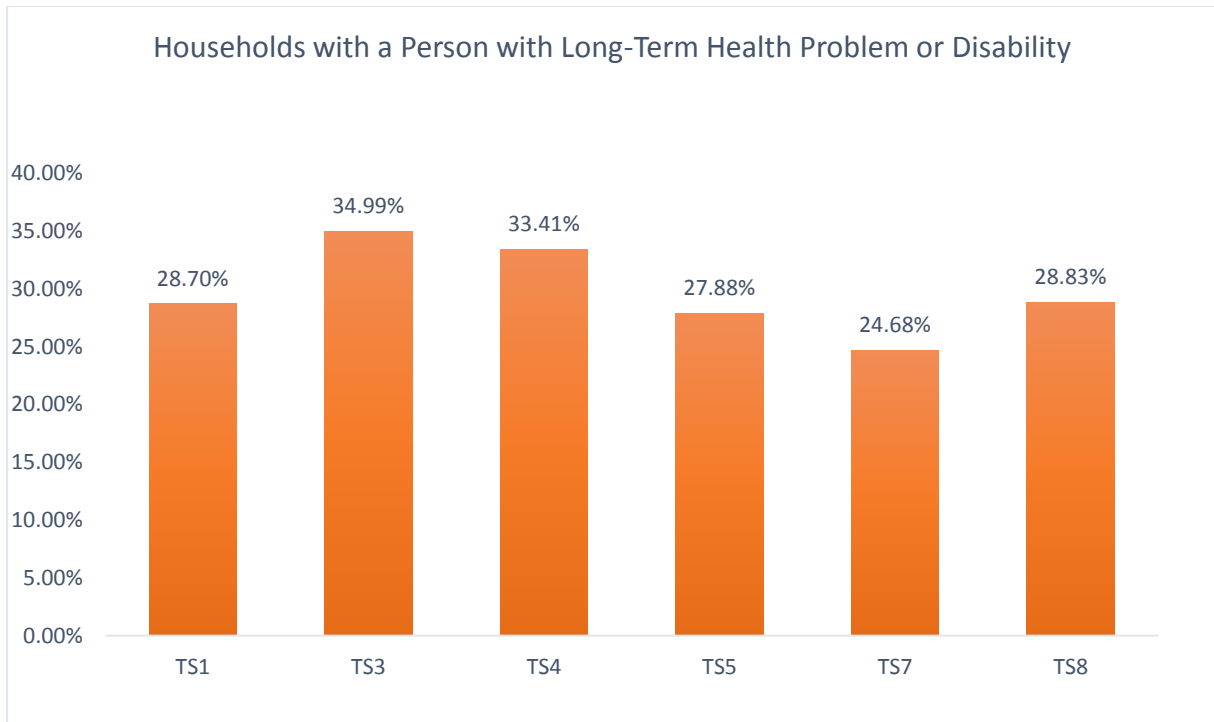


Figure 7. Households with a person with a long-term health problem or disability

The data in figure 7 shows the % of **households** within each postcode where there is a person with a long-term health problem or disability.



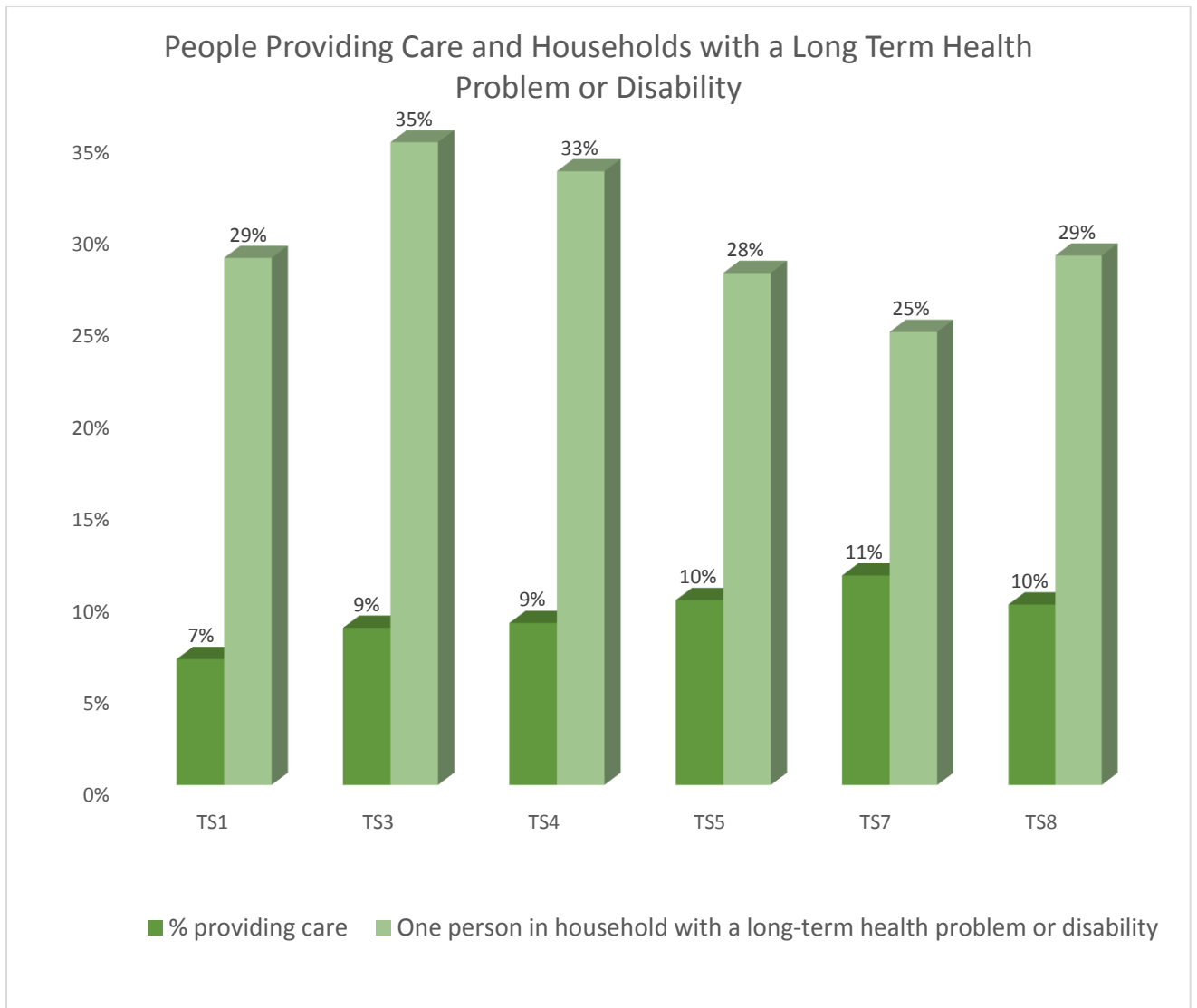
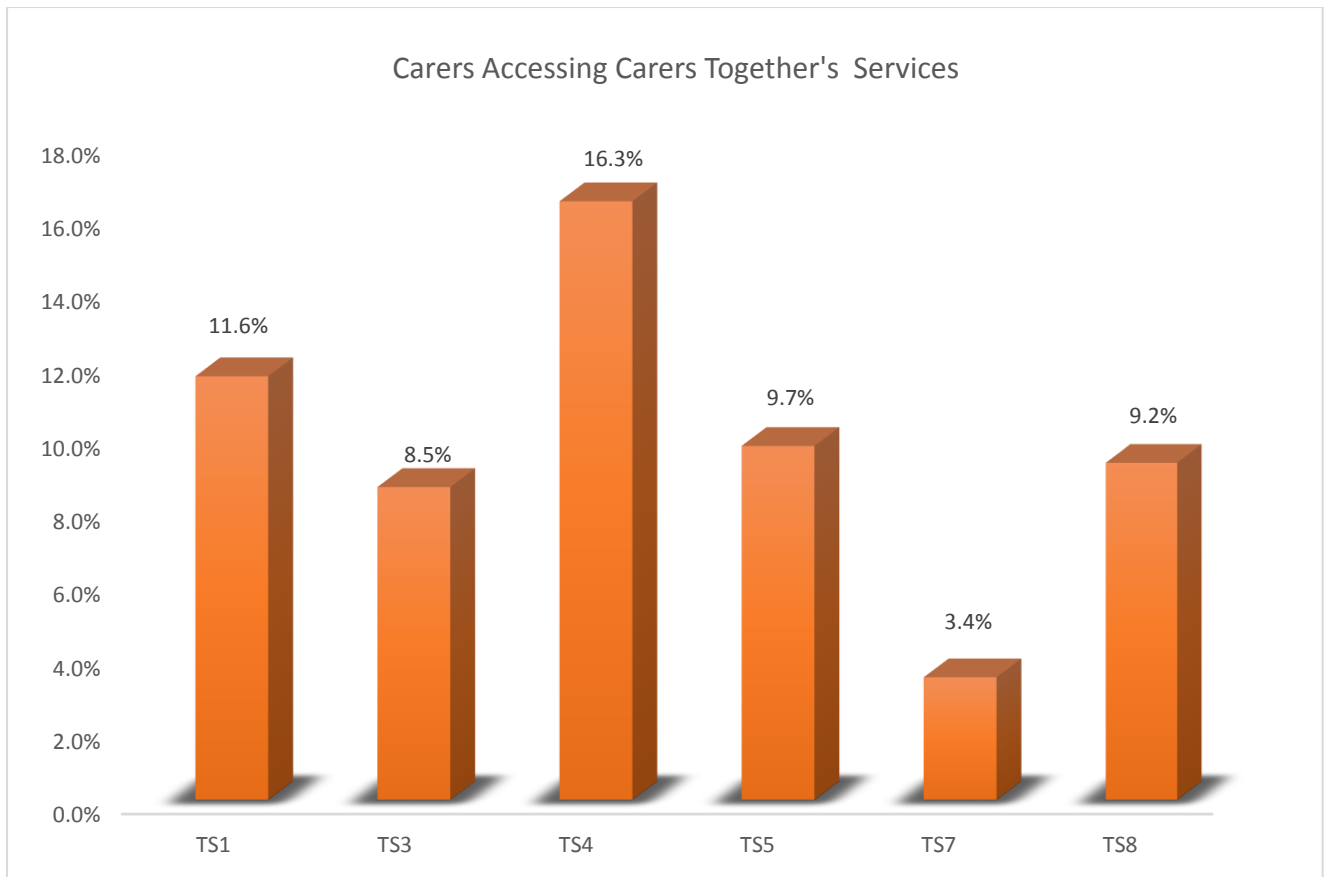


Figure 8 People providing care and households with a long-term health problem or disability





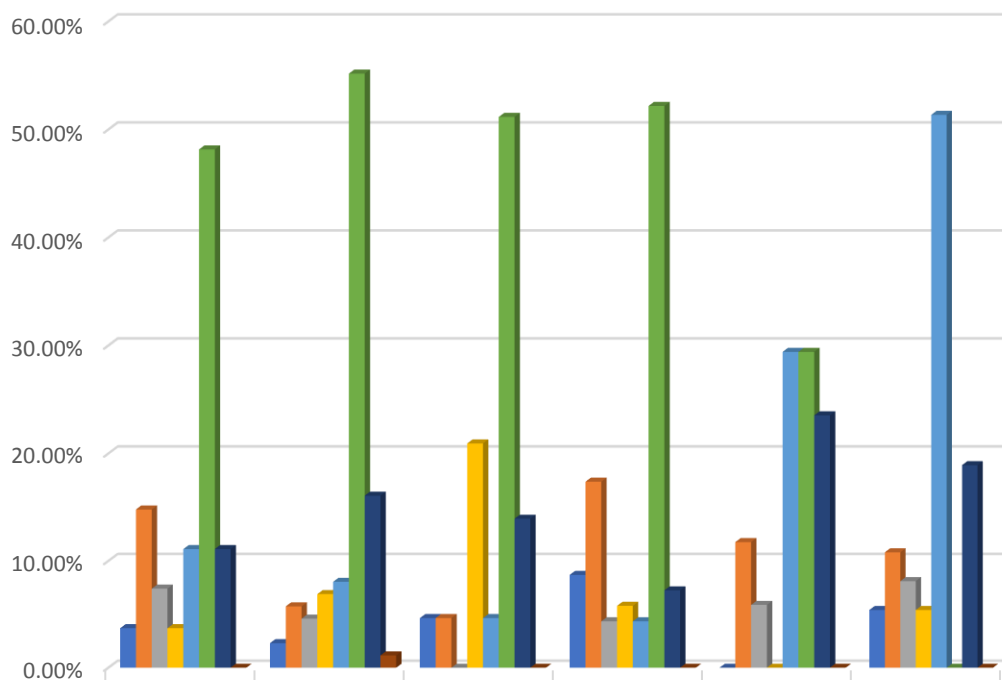
| | TS1 | TS3 | TS4 | TS5 | TS7 | TS8 |
|---|-------|-------|-------|-------|------|-------|
| Number of carers accessing Carers Together | 85 | 180 | 116 | 272 | 27 | 151 |
| Estimated number of carers over 50 | 735 | 2,107 | 710 | 2,815 | 804 | 1,641 |
| % ratio | 11.6% | 8.5% | 16.3% | 9.7% | 3.4% | 9.2% |

Figure 9. Carers accessing Carers Together's services

The data in figure 9 shows the % of carers accessing Carers Together services. These figures have been identified through the Census/ONS data and adjusted for age.



Caring Roles



| | TS1 | TS3 | TS4 | TS5 | TS7 | TS8 |
|---------------------------|--------|--------|--------|--------|--------|--------|
| ■ Cared For | 3.70% | 2.30% | 4.65% | 8.70% | 0.00% | 5.41% |
| ■ Dual Carer | 14.81% | 5.75% | 4.65% | 17.39% | 11.76% | 10.81% |
| ■ Ex Carer | 7.41% | 4.60% | 0.00% | 4.35% | 5.88% | 8.11% |
| ■ Kinship Carer | 3.70% | 6.90% | 20.93% | 5.80% | 0.00% | 5.41% |
| ■ Parent Carer (19-25) | 11.11% | 8.05% | 4.65% | 4.35% | 29.41% | 51.35% |
| ■ Parent Carer (under 18) | 48.15% | 55.17% | 51.16% | 52.17% | 29.41% | 0.00% |
| ■ Sandwich Carer | 11.11% | 16.09% | 13.95% | 7.25% | 23.53% | 18.92% |
| ■ Young Carer | 0.00% | 1.15% | 0.00% | 0.00% | 0.00% | 0.00% |

Figure 10 Caring roles



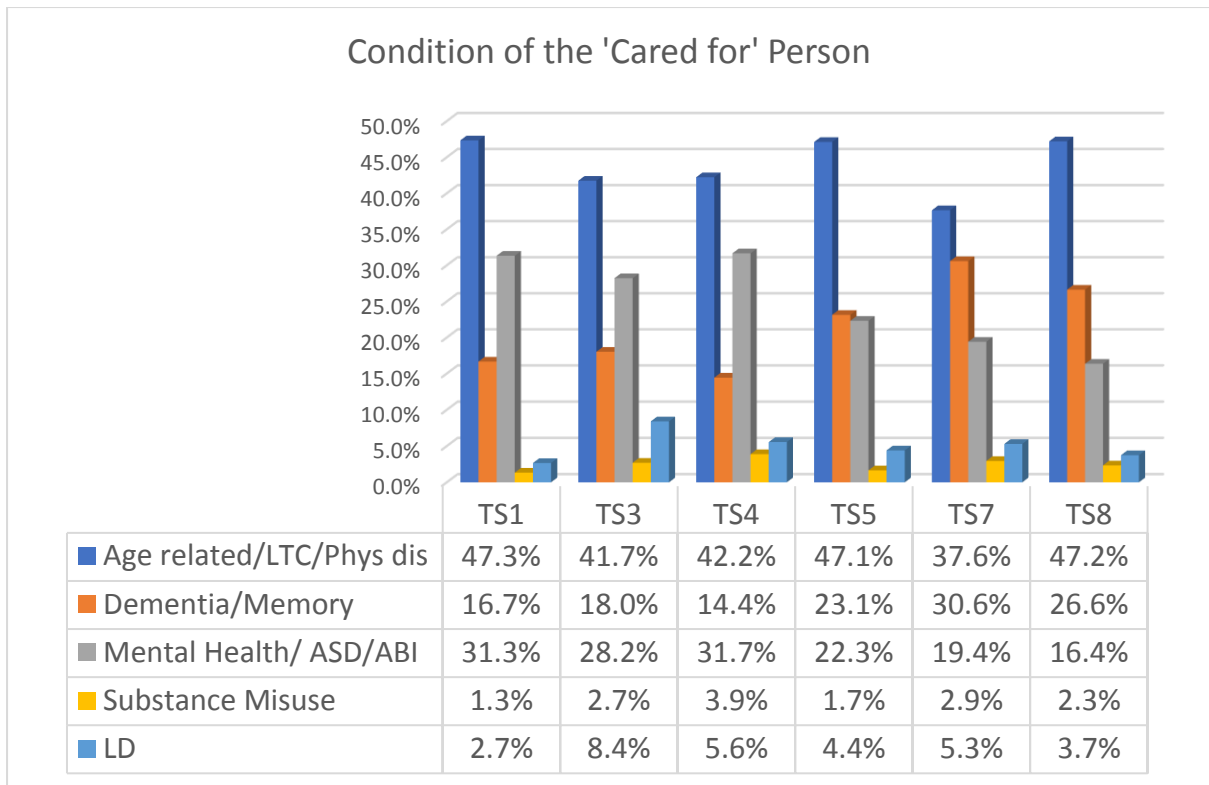


Figure 11 Condition of the 'cared for' person

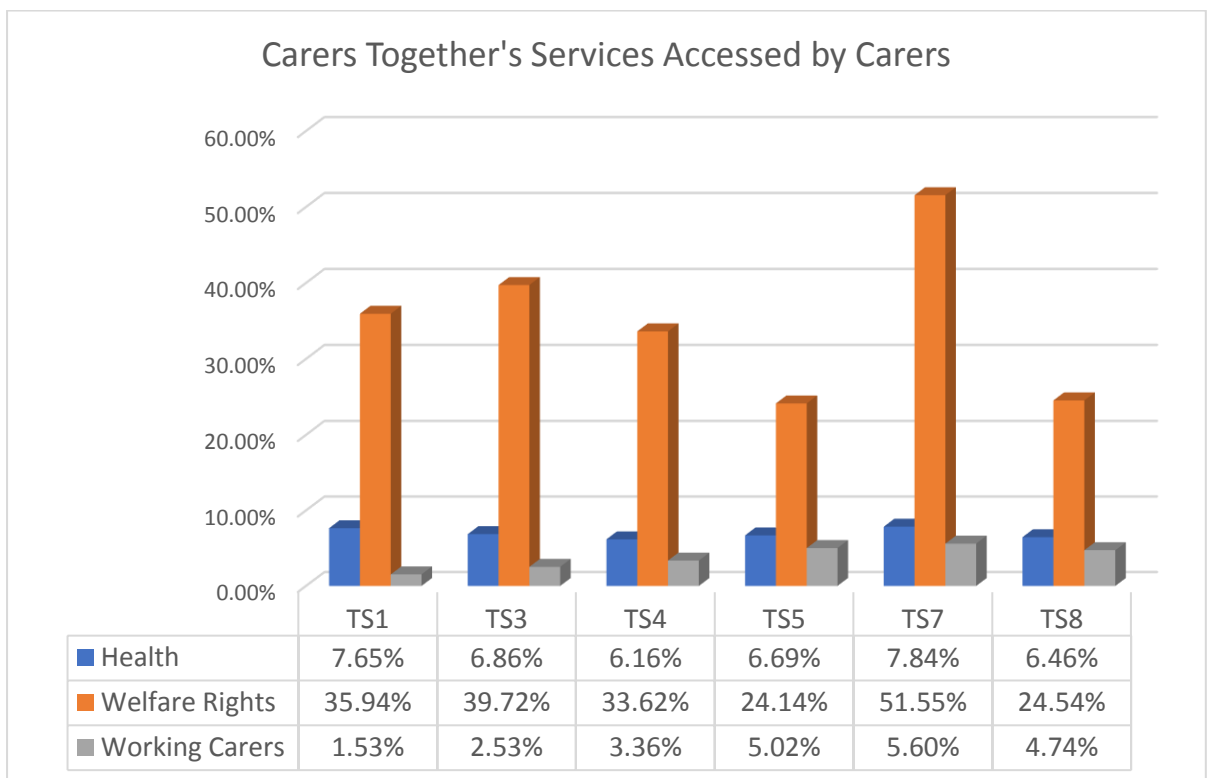


Figure 12 Carers Together's services accessed by carers



Summary of the profile of older carers by postcode area

TS1

- TS1 postcode consists of the Gresham and University wards.
- According to ONS data there are 2821 people aged over 50 in TS1. This equates to 18.4% of the total population of TS1.
- **The majority of people aged 50+ in TS1 are aged 50-59 (42.5%). This is the highest percentage within all the Middlesbrough postcode areas.** There is almost a 10% difference between TS1 and TS7. The data shows 42.5% of 50-59 year old people in the TS1 ward compared to 33.2% of 50-59 year olds in TS7.
- The self reported health status of TS1 ranks 3rd of the 6 postcodes analysed. 78.9% of people reported good or very good health.
- **TS1 has the lowest percentage of people providing care in Middlesbrough (7% compared to 11% in TS7). 33% of those who are caring provide 50 or more hours per week** compared to 19% in TS7. This is the 3rd highest percentage in Middlesbrough.
- 28.7 % of households in TS1 have a person with a long-term health problem or disability. This ranks 3rd in the Middlesbrough postcodes.
- **TS1 has the lowest number of carers (7%)** whilst ranking 3rd with 29% of households having one person with a long-term health problem or disability.
- 11.6% of older carers have accessed Carers Together Services. This is the second highest access rate in Middlesbrough.
- Apart from Adult Carers, the **caring roles in TS1 are predominantly Parent Carers (59%) Dual Carers (14.81%) and Sandwich Carers (11.11%).**
- **Older carers in TS1 are predominantly caring for people with long term conditions (47.3%). This is the highest proportion in Middlesbrough.**
- **TS1 also has the highest proportion of Mental Health Carers in Middlesbrough** (including Autistic Spectrum Disorders and Acquired Brain Injury). 31% of carers in TS1 are caring for somebody with a mental health issue compared to 16.4 % in TS8. The data also Shows that TS1 has the lowest proportion of Substance Misuse Carers(1.3% compared to 3.9% in TS4).
- **TS1 carers had the lowest access rate to Working Carers support from Carers Together (1.53% compared to 5.6% in TS7) and the second highest access to specialist health/hospital support (7.65% compared to 6.16% in TS4)**

TS3

- TS3 consists of Beckfield, Middlehaven, North Ormesby and Brambles Farm, Pallister, Park End and Thorntree.
- According to ONS data there are 10314 people aged over 50 in TS3. This equates to 29.8% of the total population of TS3.
- TS3 has the 2nd highest proportion of 75-89 year olds (21.8 % compared to 18.8 % in TS4) and has the lowest proportion of people over 90 (1.4% joint with TS5).



- **10.4% of older people in TS3 reported bad health or very bad health. This was the highest proportion in Middlesbrough.**
- 9% of older people in TS3 provide care. This is the second lowest proportion in Middlesbrough (joint with TS4)
- **39.6 % of carers in TS3 provide 50 or more hours unpaid care a week and 20.7% provide 20-49 hours per week. This is the highest proportion in Middlesbrough and suggests that individual carers in TS3 provide more hours of care than carers in other areas in Middlesbrough.**
- **TS3 has the highest % of households with a person with a long term health problem or disability (34.99% compared to 24.68% in TS7).**
- TS3 has the highest % of households with a person with a long term health problem or disability and the second lowest % of people providing care.
- 8.5% of older carers in TS3 have accessed Cars Together Services. This is the second lowest access rate behind TS7 (3.4%). The highest access rate is 16.3% from TS4.
- According to Carers Together data, **TS3 has the highest rate of Parent Carers of children under 18 (55%) accessing support** in Middlesbrough.
- **8.4% of carers in TS3 are caring for somebody with a learning disability. This is the highest proportion in Middlesbrough (TS1 =2.7%)**
- The second highest proportion of carers accessing Carers Together Welfare Rights support came from TS3 (39.72%). the second lowest proportion of carers accessing Carers Together Working Carers support came from TS3 (2.53%).

TS4

- TS4 consists of Beechwood and Clairville wards.
- According to ONS data there are 3533 people aged over 50 in TS4. This equates to 31.3 % of the total population of TS4.
- **TS4 has the highest proportion of people aged 85-89 (4.3%) and the lowest proportion of people aged 75-84 (14.5%)**
- 10.2 % of older people in TS4 have self-reported their health status as bad or very bad. This is the second highest proportion in Middlesbrough.
- 9% of older people in TS4 reported that they provide care. This is the second lowest proportion alongside TS3.
- **37.4% of older people in TS4 provide 50 or more hours of unpaid care a week. This is the second highest proportion in Middlesbrough** behind TS3.
- TS4 has the second highest % of households with a person with a long term health problem or disability (33.4%).
- **16.3% of older carers in TS4 have received information and/or support from Carers Together. This is the highest proportion in Middlesbrough** when compared to 3.4% in TS7
- **There has been a significantly higher proportion of Kinship Carers accessing support from Carers Together from TS4 (20.93% compared to 0% in TS7).**
- According to Carers Together data, TS4 has the lowest proportion of Carers caring for someone with Dementia/memory problems (14.4% compared to 30.6% in TS7). **TS4 also has the highest proportion of Substance Misuse carers (3.9% compared to 1.3% in TS1)**



TS5

- TS5 consists of Acklam, Ayresome, Brookfield, Kader, Ladgate and Linthorpe wards.
- **TS5 has the highest number of people aged over 50 in Middlesbrough.** There are 14281 people aged over 50. This equates to 37 % of the total population of TS5.
- TS5 has the highest proportion of older people aged 75-84 (17.3% compared to 15.4% in TS7)
- **80.8% of older people in TS5 have self-reported that they had good or very good health. This was the second highest rating behind TS7 (83.7%)**
- **8.7% of carers in TS5 were also being 'cared for'. This was the highest proportion across all postcodes.** TS5 also had the highest proportion of Dual Carers (17.39% compared with 4.65% in TS4).
- TS5 had the lowest proportion of older carers accessing Welfare Right support from Carers Together (24.14% compared to 51.5% in TS7).

TS7

- TS7 consists of Marton and Nunthorpe Wards.
- According to ONS data there are 4247 people aged over 50 in TS7. This equates to 44.3 % of the total population of TS7. **This is the highest proportion of older people in Middlesbrough (44.3% compared to 18.4% in TS1)**
- **46% of older people in TS7 are aged 60-74. This is also the highest proportion of age range across Middlesbrough.**
- **TS7 has the highest proportion of older people reporting their health as good or very good (83.7%).**
- **TS7 has the highest proportion of older people providing care (11% compared to 7% in TS1)**
- **71% of older carers in TS7 provide 1-19 hours care per week compared to 39.6% in TS3. This is the highest proportion across Middlesbrough**
- 19% of older carers provide 50 or more hours per week compared to 39.6% in TS3 . This is the lowest proportion across Middlesbrough.
- **TS7 has the lowest % of households with a person with a long term health problem or disability (24.68%).**
- **TS7 has the highest proportion of older people providing care and the lowest % of households with a person with a long term health problem or disability.**
- **3.4 % of older carers accessing Carers Together services came from TS7, compared to 16.3% from TS4. This is the lowest access rate across Middlesbrough.**
- **TS7 had more sandwich carers (23.53% compared to 7% in TS5) than any other postcode area.** This suggests that older carers in TS7 are providing more care for parent/s and children/partners at the same time.
- **Older carers in TS7 are caring for the highest proportion of people with Dementia/Memory problems (30.6% compared to 14.4% in TS4).** These older carers are also providing the lowest proportion of care to people with long term conditions (37.6% compared to 47.3 in TS1).
- **TS7 has the highest proportion of carers that have accessed specialist support from Carers Together.** 51% of older carers have accessed Carers Together Welfare Rights service (compared to 24.1% in TS5), 7.8% have accessed specialist health/hospital support and 5.6 % have access specialist working carer support.



TS8

- TS8 consists of Coulby Newham, Hemlington, Marton West and Stainton and Thornton.
- According to ONS data there are 8645 people aged over 50. This equates to 37.4% of the population of TS8.
- 10% of older people in TS8 are providing care
- TS8 has the third highest proportion of households where there is a person with a long-term health problem or disability (28.33%).
- 9.2% of older carers have accessed Carers Together Services
- Apart from adult carers, **TS8 has the highest proportion of Parent Carers of someone aged 19-25** (51.3 % compared to 4.35% in TS5). Carers Together are providing or have provided support to 8.1% of ex carers in TS8. This is the highest proportion of support provided to ex carers in Middlesbrough.

